



Test Report

No. SHAMLP1317140201

Date: 03 Sep 2013

Page 1 of 3

JUMEI ACRYLIC MANUFACTURING CO.,LTD.
YUSHAN INDUSTRIAL ZONE

The following sample(s) was/were submitted and identified on behalf of the clients as : Jumei-Acrylic

SGS Job No. : SHIN1308002411PC(E) SHIN1308002412PC(C) - SH
Date of Sample Received : 28 Aug 2013
Testing Period : 28 Aug 2013 - 03 Sep 2013
Test Requested : Selected test(s) as requested by client.
Test Method : Please refer to next page(s).
Test Results : Please refer to next page(s).

Signed for and on behalf of
SGS-CSTC Ltd.

JJ Fan
Approved Signatory

This document is issued by the Company subject to its General Conditions of Service printed overleaf, available on request or accessible at <http://www.sgs.com/en/Terms-and-Conditions.aspx> and for electronic format documents, subject to Terms and Conditions for Electronic Documents at <http://www.sgs.com/en/Terms-and-Conditions/Terms-e-Documents.aspx>. Attention is drawn to the limitation of liability, indemnification and jurisdiction issues defined therein. Any holder of this document is advised that information contained herein reflects the Company's findings at the time of its intervention only and within the limits of Client's instructions, if any. The Company's sole responsibility is to its Client and this document does not exonerate parties to a transaction from exercising all their rights and obligations under the transaction documents. This document cannot be reproduced except in full, without prior written approval of the Company. Any unauthorized alteration, forgery or falsification of the content or appearance of this document is unlawful and offenders may be prosecuted to the fullest extent of the law. Unless otherwise stated the results shown in this test report refer only to the sample(s) tested and such samples are retained for 30 days only.

Attention: To ensure the authenticity of issuing (inspection) report & certificate, please contact us at telephone: (86-755)83071443, or email: CN.Quechek@sgs.com

SGS-CSTC Technical Services (Shanghai) Co., Ltd.
Testing Center

No.69, Block 1159, East Kang Qiao Road, Pudong District, Shanghai, China 201319 t(86-21)61196300 f(86-21)68183122/68183920 www.sgs.com.cn
中国·上海·浦东康桥东路1159弄69号 邮编:201319 t(86-21)61196300 f(86-21)68183122/68183920 e sgs.china@sgs.com



Test Report

No. SHAMLP1317140201

Date: 03 Sep 2013

Page 2 of 3

Test Results :

Test Part Description :

Specimen No.	SGS Sample ID	Description
1	SHA13-171402.001	Transparent solid piece

Remarks :

- (1) 1 mg/kg = 1 ppm = 0.0001%
- (2) MDL = Method Detection Limit
- (3) ND = Not Detected (< MDL)
- (4) "-" = Not Regulated

RoHS Directive 2011/65/EU

- Test Method :
- (1) With reference to IEC 62321-5:2013, determination of Cadmium by ICP-OES.
 - (2) With reference to IEC 62321-5:2013, determination of Lead by ICP-OES.
 - (3) With reference to IEC 62321-4:2013, determination of Mercury by ICP-OES.
 - (4) With reference to IEC 62321:2008, determination of Hexavalent Chromium by Colorimetric Method using UV-Vis.
 - (5) With reference to IEC 62321:2008, determination of PBBs and PBDEs by GC-MS.

Test Item(s)	Limit	Unit	MDL	001
Cadmium (Cd)	100	mg/kg	2	ND
Lead (Pb)	1000	mg/kg	2	ND
Mercury (Hg)	1000	mg/kg	2	ND
Hexavalent Chromium (Cr(VI))	1000	mg/kg	2	ND
Sum of PBBs	1000	mg/kg	-	ND
Monobromobiphenyl	-	mg/kg	5	ND
Dibromobiphenyl	-	mg/kg	5	ND
Tribromobiphenyl	-	mg/kg	5	ND
Tetrabromobiphenyl	-	mg/kg	5	ND
Pentabromobiphenyl	-	mg/kg	5	ND
Hexabromobiphenyl	-	mg/kg	5	ND
Heptabromobiphenyl	-	mg/kg	5	ND
Octabromobiphenyl	-	mg/kg	5	ND
Nonabromobiphenyl	-	mg/kg	5	ND
Decabromobiphenyl	-	mg/kg	5	ND
Sum of PBDEs	1000	mg/kg	-	ND
Monobromodiphenyl ether	-	mg/kg	5	ND

This document is issued by the Company subject to its General Conditions of Service printed overleaf, available on request or accessible at <http://www.sgs.com/en/Terms-and-Conditions.aspx> and, for electronic format documents, subject to Terms and Conditions for Electronic Documents at <http://www.sgs.com/en/Terms-and-Conditions/Terms-e-Documents.aspx>. Attention is drawn to the limitation of liability, indemnification and jurisdiction issues defined therein. Any holder of this document is advised that information contained herein reflects the Company's findings at the time of its intervention only and within the limits of Client's instructions, if any. The Company's sole responsibility is to its Client and this document does not exonerate parties to a transaction from exercising all their rights and obligations under the transaction documents. This document cannot be reproduced except in full, without prior written approval of the Company. Any unauthorized alteration, forgery or falsification of the content or appearance of this document is unlawful and offenders may be prosecuted to the fullest extent of the law. Unless otherwise stated the results shown in this test report refer only to the sample(s) tested and such sample(s) are retained for 30 days only.

Attention: To ensure the authenticity of testing / inspection report & certificate, please contact us at telephone: (86-755)83071443, or email: CN.Qoscheck@sgs.com

SGS-OSTO Technical Services (Shanghai) Ltd.
Testing Center

No.69, Block 1159, East Kang Qiao Road, Pudong District, Shanghai, China 201319 t:(86-21)61196300 f:(86-21)68183122/68183920 www.sgsgroup.com.cn
中国·上海·浦东康桥东路1159弄69号 邮编:201319 t:(86-21)61196300 f:(86-21)68183122/68183920 e sgs.china@sgs.com

Test Report

No. SHAMPL1317140201

Date: 03 Sep 2013

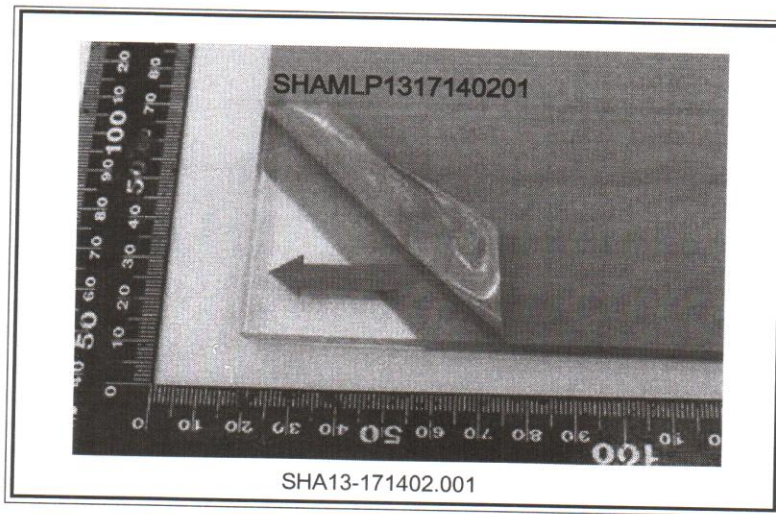
Page 3 of 3

Test Item(s)	Limit	Unit	MDL	001
Dibromodiphenyl ether	-	mg/kg	5	ND
Tribromodiphenyl ether	-	mg/kg	5	ND
Tetrabromodiphenyl ether	-	mg/kg	5	ND
Pentabromodiphenyl ether	-	mg/kg	5	ND
Hexabromodiphenyl ether	-	mg/kg	5	ND
Heptabromodiphenyl ether	-	mg/kg	5	ND
Octabromodiphenyl ether	-	mg/kg	5	ND
Nonabromodiphenyl ether	-	mg/kg	5	ND
Decabromodiphenyl ether	-	mg/kg	5	ND

Notes :

(1) The maximum permissible limit is quoted from directive 2011/65/EU, Annex II

Sample photo:



SGS authenticate the photo on original report only

*** End of Report ***

This document is issued by the Company subject to its General Conditions of Service printed overleaf, available on request or accessible at <http://www.sgs.com/en/Terms-and-Conditions.aspx> and for electronic format documents, subject to Terms and Conditions for Electronic Documents at <http://www.sgs.com/en/Terms-and-Conditions/Terms-and-Conditions.aspx>. Attention is drawn to the limitation of liability, indemnification and jurisdiction issues defined therein. Any holder of this document is advised that information contained hereon refers to the Company's findings at the time of its intervention only and within the limits of Client's instructions, if any. The Company's sole responsibility is to its Client and this document does not exonerate parties to a transaction from exercising all their rights and obligations under the transaction documents. This document cannot be reproduced except in full, without prior written approval of the Company. Any unauthorized alteration, forgery or falsification of the content or appearance of this document is unlawful and offenders may be prosecuted to the fullest extent of the law. Unless otherwise stated the results shown in this test report refer only to the sample(s) tested and such sample(s) retained for 30 days only.

Attention: To ensure the authenticity of testing/inspection report & certificate, please contact us at telephone: (86-755)83071443, or email: CN_Qccheck@sgs.com

SGS-CTC (Shanghai) Technical Services (Shanghai) Co., Ltd. No.69, Block 1159, East Kang Qiao Road, Pudong District, Shanghai, China 201319 t(86-21)61196300 f(86-21)68183122/68183920 www.sgsgroup.com.cn
 Testing Center (Shanghai) No.69, Block 1159, East Kang Qiao Road, Pudong District, Shanghai, China 201319 t(86-21)61196300 f(86-21)68183122/68183920 e sgs.china@sgs.com